

# Flame Proof Type Sampling Flammable Gas Detector

## GTD-5000F Ex

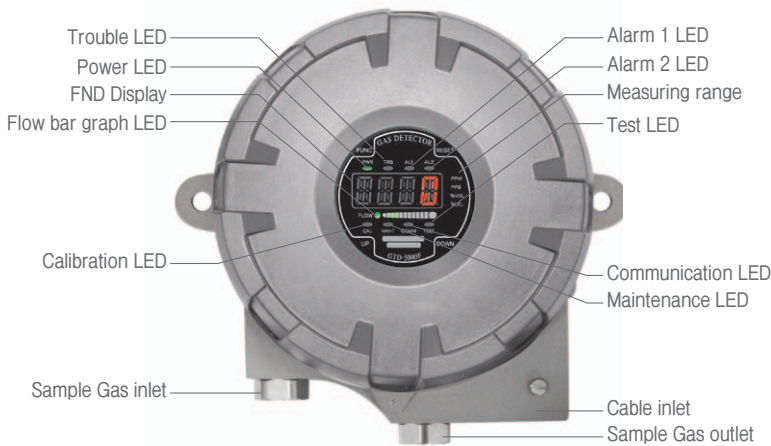
### Feature

- ▷ Continuous detection of flammable gases in explosion hazardous area with flame proof structure
- ▷ Self diagnosis function with built-in Microprocessor
- ▷ Easy replacement with a cartridge type sensor
- ▷ Digital flow sensor to maintain regular flow rate
- ▷ Fast response of VOC gas leakage with a high efficient pump inside
- ▷ Detection gas from low to high concentration owing to various detection principle
- ▷ Stable quality and proved detection principle for service life
- ▷ Auto calibration and program setting with a magnet bar
- ▷ 4-digit digital gas concentration display
- ▷ 4-20mA DC output signal
- ▷ Easy configuration of monitoring system by RS-485 Modbus isolated serial data communication(Optional)
- ▷ 3-wire connection for signal & power
- ▷ 2-stage alarm, 1-trouble display and relay contact output
- ▷ Calibration and maintenance by one-man

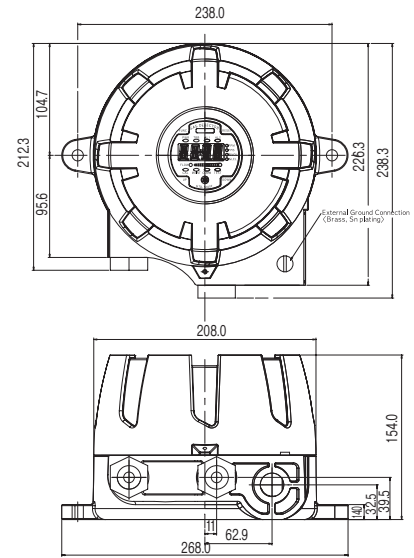


Flame Proof  
Auto Flow Control

## General



## Dimension (Unit:mm)



## Accessories



Cable gland



Male connector



Micro Filter

## Specification

※Specifications are subject to be changed without prior notice.

FLAME PROOF TYPE SAMPLING FLAMMABLE GAS DETECTOR	
Model	GTD-5000F Ex
Measuring gas	Flammable gases (LNG, LPG, H <sub>2</sub> , Methane, Butane & etc)
Measuring type	Auto Sampling type
Measuring method	Catalytic cell      Hot wire semiconductor cell      Thermal conductivity cell
Measuring range	0~100% LEL      0~2000ppm      0~100% Vol
Response time	< 15sec / 90% scale
Accuracy	±3% / Full Scale
Parameter control	Front switch (calibration, maintenance, alarm setting)
Operation mode display	Alarm / Trouble LED , Flow rate
Measuring value display	FND Display(4-Digit)
Alarm signal output	250V 1A / 3-SPST relay contact (2-stage alarm, 1-trouble)
Output signal	Analog output : 4~20mA DC Digital output : RS-485 Modbus(Optional)
Sampling method	Diaphragm Pump
Sampling line	OD 1/4" (Standard)
Flow rate	0 ~ 2000 ml/min max
Cable/Distance	Power + Signal cable : 3-wire > 1.5sq(AWG16) / 1000m max 4 ~ 20mA DC Signal : 2000m RS-485 Modbus Signal : 1000m
Conduit connection	G. Rc. NPT 1/2" & 3/4" (G 3/4" : Standard)
Mounting type	Wall mount
Operating temperature	-20°C ~ +60 °C
Operating humidity	5 to 99% RH (Non-condensing)
Operating power	Standard : 18 ~31V DC (24V DC normal) / 150mA max
Material	ALDC
Dimensions	226.3(W) × 154(H) × 238(D) mm
Weight	5kg
Approval	Explosion proof type (Ex d IIC T6, IP65) KCs